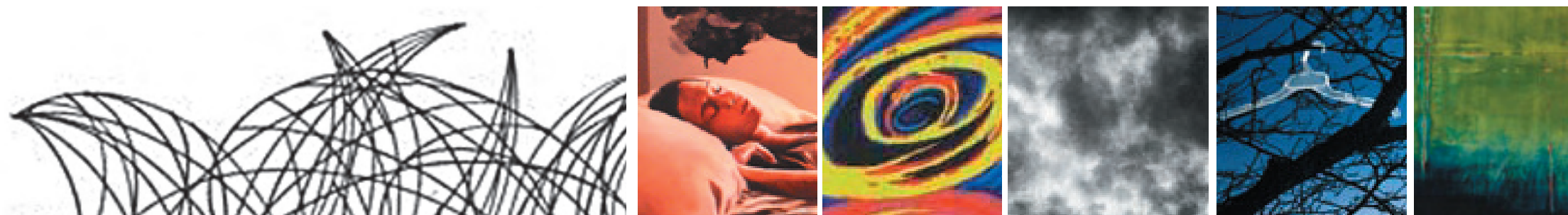


July 23–25
 Fri 4–11pm
 Sat/Sun noon–11pm

1. **BIG** (a multi-sensory sculpture garden) at parking lot at Washtenaw/Milwaukee
2. **Black. White. Red. Yellow.** (exhibit) at Sulzen Fine Arts Studio, 2720 W. Saint Georges Ct.
3. **Open Studio** of Robert C. Wittig at 2735 W. St. Georges Ct.
4. **Open Studio** of Licha De La Peña at 2203 N. California
5. **PSYCHE** (photographic exhibit), **SMALL** (multi-media exhibit of small works) and **Light on Lines** (an interactive randomized video installation) at 2314 N. Milwaukee
6. **WAX** (wax media exhibit) and **PRINT** (printmaking exhibit) at Anywhere Space Studio, 2328 N. Milwaukee
7. AntiMatter Group Show at Anti-Matter Studio, 2334 N. Milwaukee
8. **GUTTER** (multi-media exhibit) and music at Cole's Bar, 2338 N. Milwaukee
9. Art at Hairitics, 2340 N. Milwaukee
10. Art at Cafe Mustache, 2307 N. Milwaukee
11. Performance and Installation at Threads Etc Windows, 2327 N. Milwaukee
12. Logan Square Kitchen's Pop-Up Restaurants at 2333 N. Milwaukee
13. Music on the street at OHRS, 2341 N. Milwaukee
14. **Everyday Occurances** (exhibit) and Performance at Mixed Motion Art, 2355 N. Milwaukee
15. **Community Mural Activity** Medill near Milwaukee
16. **Off the Beaten Path** (exhibit) and Performance at Center Portion, 2850 1/2 W. Fullerton
17. Window Exhibition at Whistler, 2421 N. Milwaukee

SOUTH END ART GALLERIES

of the 2010 Milwaukee Avenue Arts Festival



Milwaukee Avenue
Arts Festival
 Presented by I AM Logan Square

2200–2450 North Milwaukee
Around the California BlueLine Stop